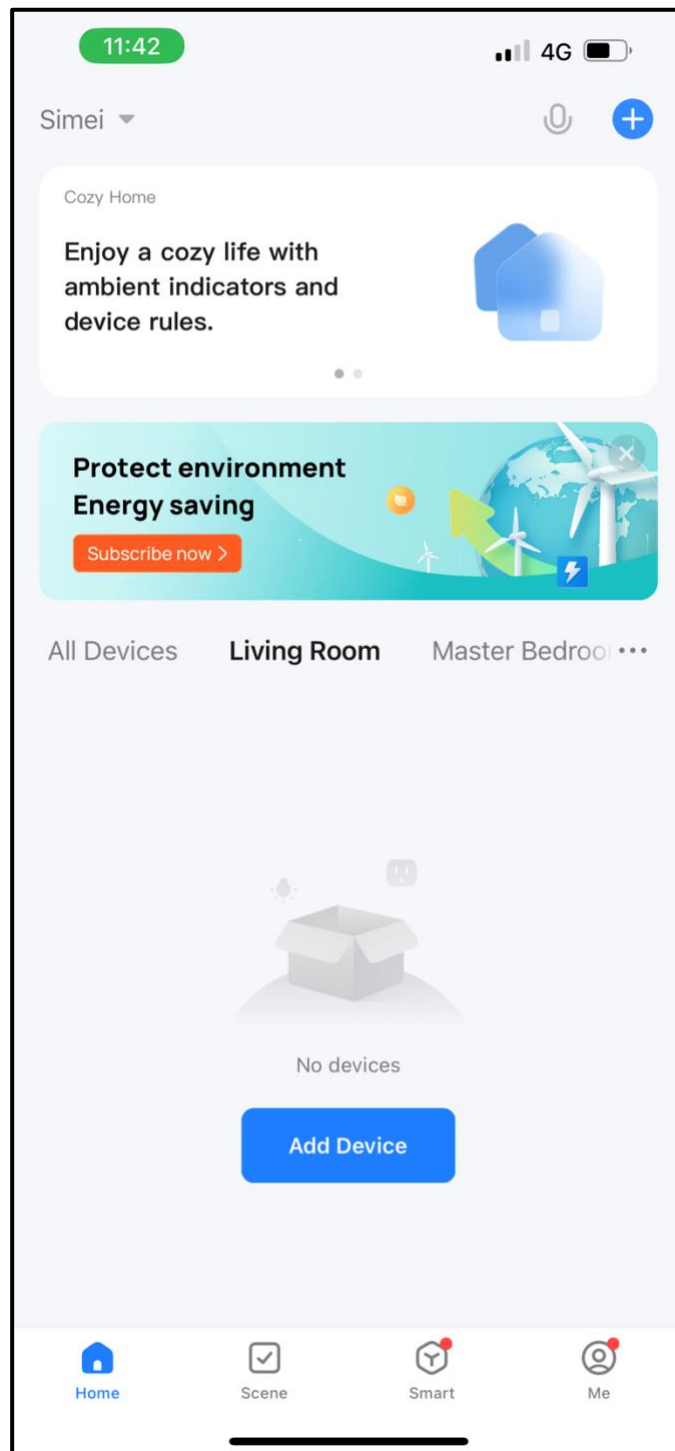


# Smart LED Strip Wifi Setup

## Step 1

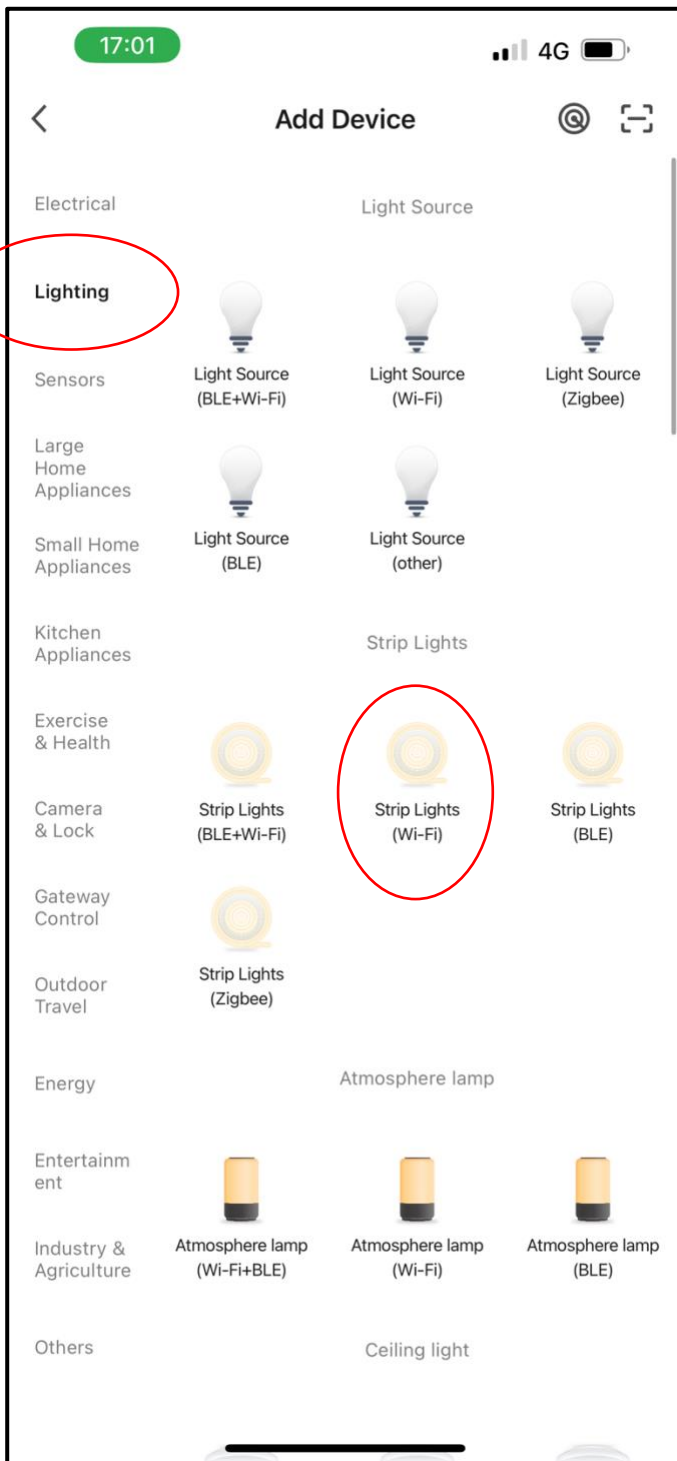
- 1) Turn on light switch and turn off again. Repeat for 3 times until light start blinking rapidly.

## Step 2



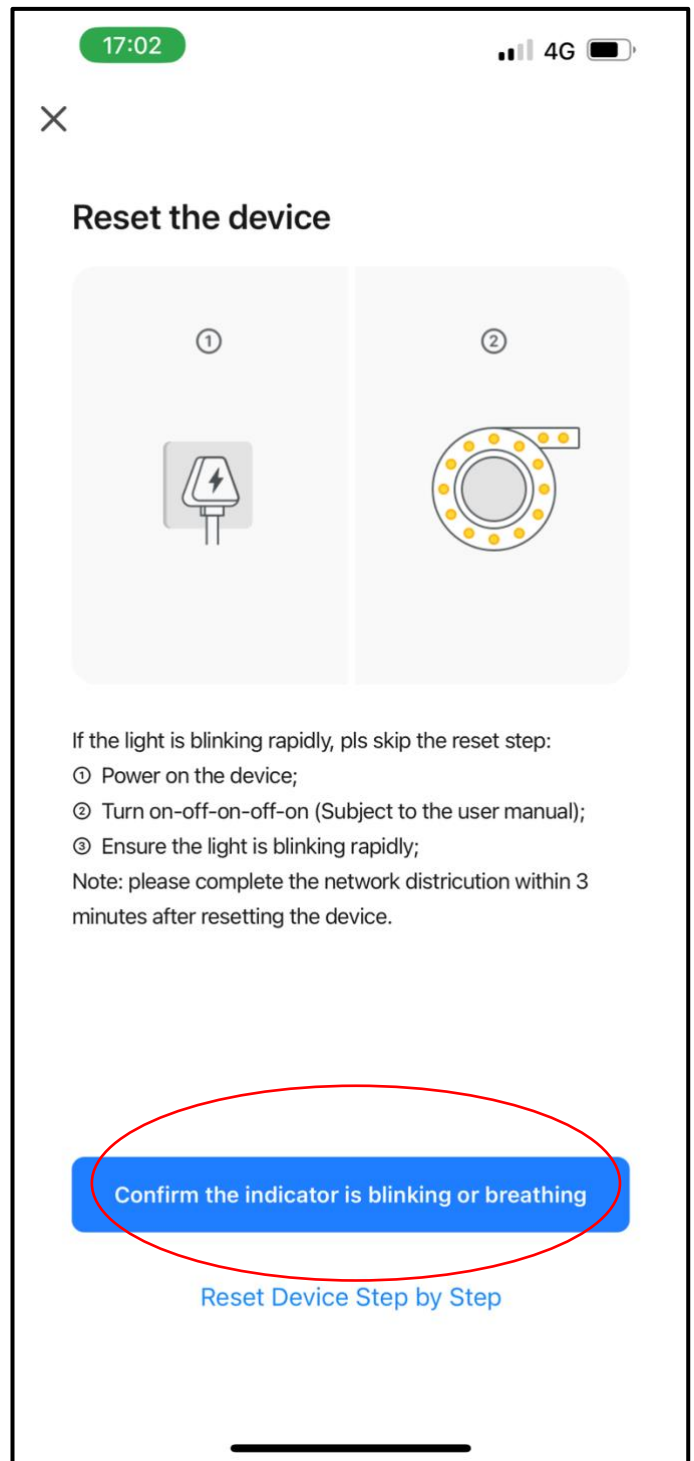
Tap the top right + to add device.

### Step 3



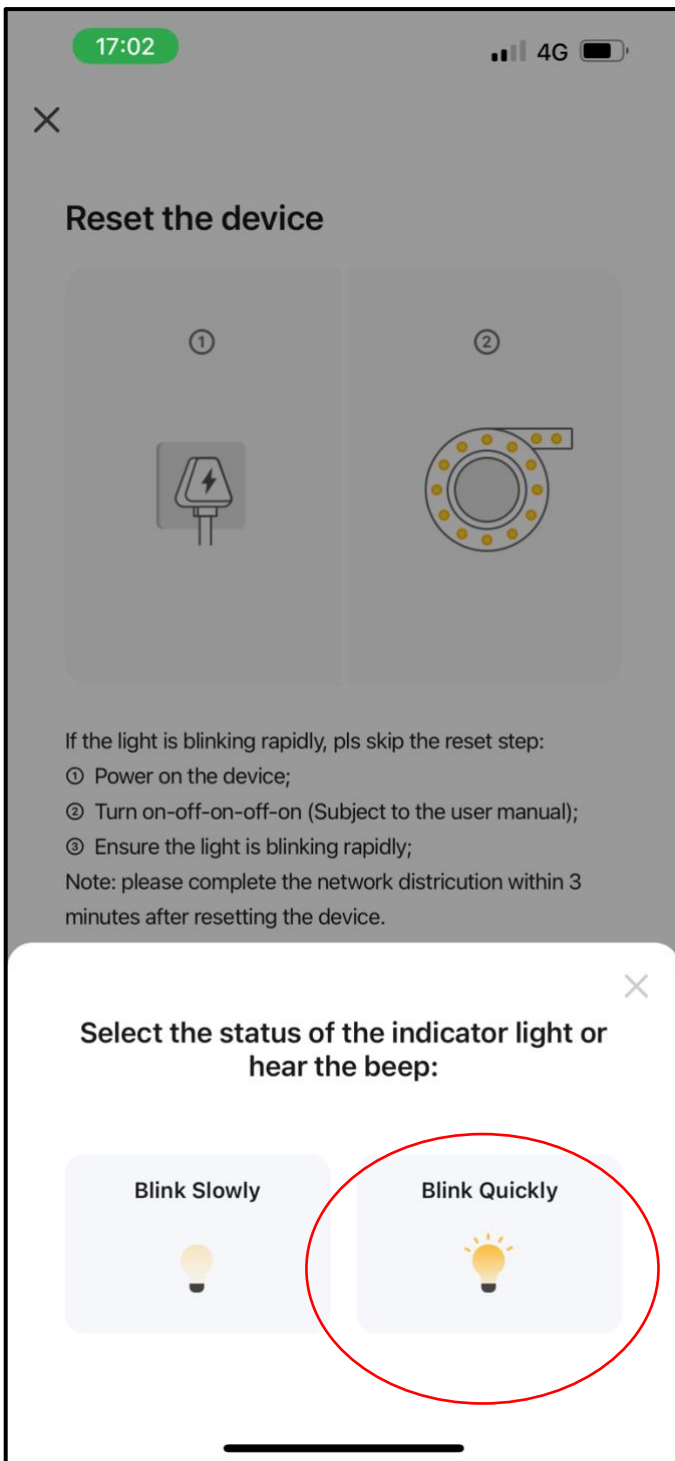
Select the correct item.

### Step 4



Tap the red circled icon.

## Step 5



Tap the red circled icon.

Wait for the pairing to be set up.

If pairing is un-successful, please follow step 1 again.